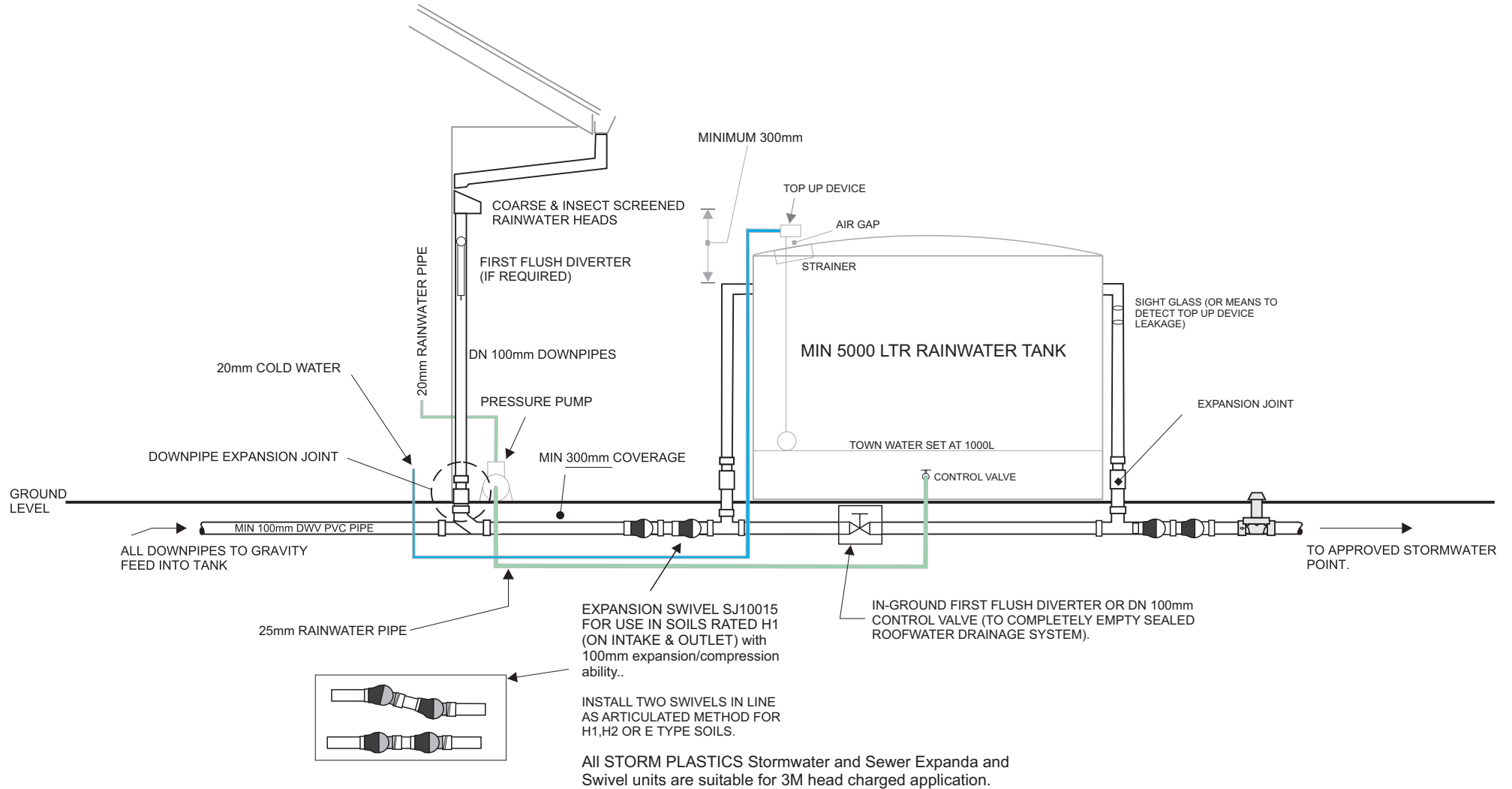



REACTIVE SOILS DRAINAGE INSTALLATION GUIDELINES



Please refer to Storm Plastics Table No. SP -1 for additional details on flow gradients and installation

Drawing No. SP 110	ABOVE GROUND RAINWATER TANKS	NOT DRAWN TO SCALE
PRODUCT NAME	RECOMENDED FLEXIBLE COUPLINGS IN ABOVEGROUND TANK FITTED WITH REFLUX VALVE	
SOIL	REACTIVE SOILS - H ₁ , H ₂ , E,	
COMPANY	STORM PLASTICS Pty Ltd	
DRAWING DATE	October, 2019	
MATERIAL	Poly Vinyl Chloride - PVC - U	
DIMENSIONS	All dimensions shown are nominal in mm and subject to change without notice.	



Manufactured under a quality system certified as complying with ISO 9001 by an accredited certification body